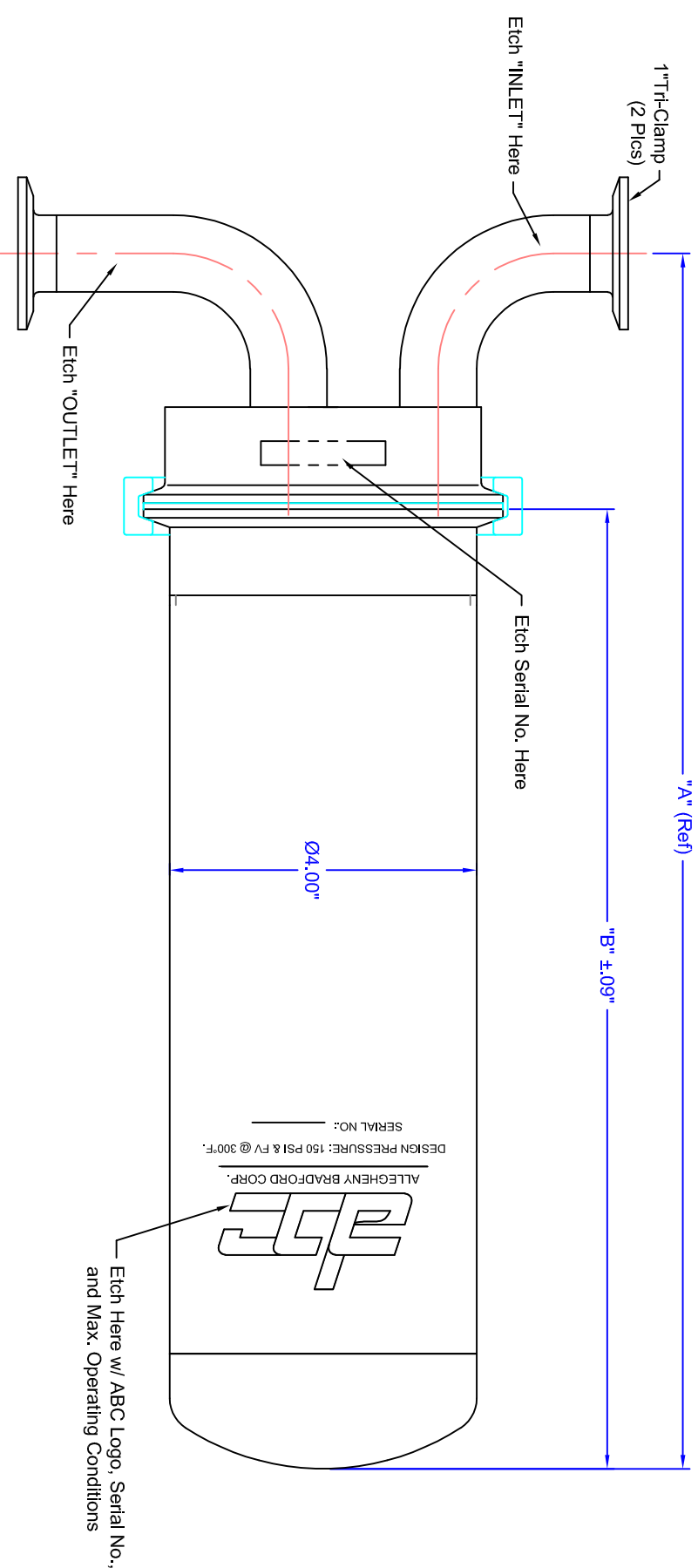
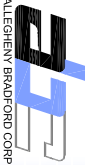


Part No.	"A"Dim.	"B"Dim.
-5	11.08"	7.75"
-10	15.83"	12.50"
-20	25.83"	22.50"
-30	35.83"	32.50"
-40	44.33"	41.00"




- Notes:
- 1) Material: Housing-316L S/S
Weld Wire-317L S/S
Clamp-304 S/S
Elastomers- (As Requested)
 - 2) Finish: Interior- (As Requested)
Exterior- (As Requested)
 - 3) Design Pressure: 150 psig & Full Vacuum @ -20°F/300°F
 - 4) Hydrottest Pressure: 205 psig



ALLEGHENY BRADFORD CORP.
This drawing and the design it conveys are the property of Allegheny Bradford Corporation. They are furnished on a confidential basis, of which the recipient must be made aware. The recipient shall not, in any manner whatsoever, except in the limited way and provide use permitted by written consent given by Allegheny Bradford Corporation.

TITLE:
 (Customer Name Here)
Sanitary 1 Round T-Type Housing

PROJECTION: 

TOLERANCE: .XX ±
.XXX ±
ANGLE ± 1°

TAG NO.: _____ SERIAL NO.: _____
 P.O. NO.: _____ CALC NO.: _____

FILE: UST01.dwg SHEET: OF
 CHK BY: _____
 SCALE: NTS

UST01 REV.